



CS LEE

BUSINESS PROFILE

CS LEE KNIT COMPOSITE LTD

100% EXPORT ORIENTATED COMPOSITE KNIT GARMENTS

www.csleeknitcomposite.com

DEPZ Road, Jamgora,
Ashulia, Savar, Dhaka.



CS LEE KNIT COMPOSITE LTD is one of the most successful textile manufacturers in Bangladesh , a country with great potential in the field of Garment manufacturing.

The **100% export** orientated readymade garment industry has been functioning very successfully on a worldwide scale, especially in EU countries, the **USA, Canada** and **Latin America**.

Exclusivity of **CS LEE KNIT COMPOSITE LTD** lies in its clearly defined quality policy, management structure and the capability to offer a wide range of products, such as Trousers, T-shirts, Tank Top, Polo Shirts, Shorts, Hoodie, Sweatpants, Sweatshirts Joggers& All Kinds of Knit Garments for Men, Women and Children.

CS LEE has a social policy that is fully in accordance with the laws of the country.

GENERAL INFORMATION

Name of Company: CS LEE KNIT COMPOSITE LTD

Year of Establishment: 2021

Legal Status: Private Limited Company

Type of Business: Manufacture and Exporter of RMG (Knit Factory)

Contact Person:  **Md. Omar Faruque (MD),**
 +88 01712508485
 faruque@csleeknitcomposite.com

 **Humayun Kabir (Chairman),**
  kabir@csleeknitcomposite.com

Web Site: www.csleeknitcomposite.com

Member of: BGMEA

Year of inception: 2021

Total sewing line: 15

Total production floor space: 53,000 sft

Total workforce: 620

Total sewing machines: 350

Location: DEPZ Road, Jamgora, Ashulia, Savar, Dhaka

Manufacturing business: Readymade knit apparel

Monthly production capacity: 5 Lac Pcs of RMG

Lead time: 08-15 weeks



EXPERIENCE TALKS

A JOURNEY THAT STARTED IN 2021



With many years of business experience, we have learned how to guide our company through good and tough times. Our secret is simple: always plan ahead, work honestly, and build strong relationships. Our success today is built on a solid foundation from our early days, when we first started working with international partners and learning the industry from the ground up.

True success comes from looking forward and helping our teams try new ideas. Innovation is what keeps our business moving ahead. We believe that good management and being ready to change helps us satisfy our clients perfectly. We always focus on high quality, trust, and doing our best in everything we do.

Today, our company works in many markets around the world to meet different needs. By using new technology and maintaining strong partnerships, we keep growing every day. We are fully ready to deliver the best results and build a brighter, more sustainable future for everyone.

Humayun Kabir

Chairman

CS LEE Knit Composite Ltd.

EXPERIENCE TALKS

A JOURNEY THAT STARTED IN 2021



With 6 years of garments manufacturing business experience we've literally experienced everything and have worked on every possible style & fit. Keeping up with the changing trends and upcoming challenges has been our secret mantra. It is not only our experience of 6 years but also 9 to 10 years back where we worked as buying agents for Buyer with the banner of AA Sourcing and Trading Limited.

Success lies in our ability to adapt quickly to the latest fashion trends. Innovation fuels our wagon in our journey to success. Fashion is geographical and we are flexible in meeting the requirements of every customer. We maintain high degree of efficiency in our quality and productivity every time.

The company is engaged in wide array of fashion catering to diverse markets of the world each having different needs and tastes. Supplying all types of knit garments, with different washes, embroideries and surface treatment. Our partner factories have sewing capabilities for all types of garments including polo-shirts, tees, hoodie, under garments, dresses, cut and sew knit.

Md. Omar Faruque

Managing Director.

CS LEE Knit Composite Ltd.

VISION & MISSION



Our Belief

We believe that our customers must stand at the Centre of all our activities.



Our Vision

Our vision is to develop further into a highly reputed manufacturer of garments in the global market by producing top quality products which meet our customer's needs & expectations



Our Mission

To satisfy buyers with on time delivery and with best quality

Our Message

- Provide highest quality in every regards.
- Use quality products at the best price possible.
- Our reputation lies in our word and our work we will never sacrifice in either.
- Our strength lies in our associates; we strive to provide working atmosphere that they can be proud of.

I firmly believe whatever happens in the company is my responsibility and the founding vision of the company is always adhered to.

PRODUCTION & CAPACITY

A major strength of **CS LEE KNIT COMPOSITE LTD** is its Planned infrastructure, which is reinforced by 500+ employees who form the backbone of the company. Employees are trained about the importance of team work Culture. Departments are headed by experienced managers and assisted by supervisors who undergo continuous training and are exposed to the new developments in the industry



DESIGN & DEVELOPMENT

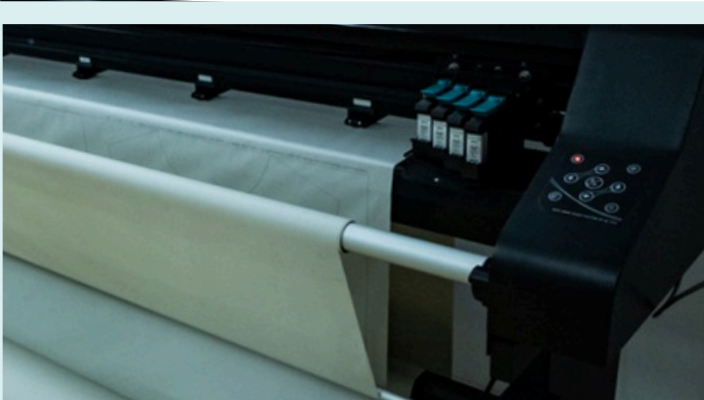


CS LEE KNIT COMPOSITE LTD understand the requirement of moving with constantly changing fashion trends and can therefore adapt to the needs of Clients. This keeps CS LEE one step ahead of other textile manufacturers in Bangladesh



SAMPLE DEPARTMENT

We develop and provide samples as per buyers design, fabric quality, weight, shrinkage, color fastness, specifications etc. to obtain buyers approval before heading to production through our professional staff of Merchandisers and Quality Controllers who always keep a close check on sampling and production.



KNITTING DEPARTMENT

Harnessing the capabilities of 10 state-of-the-art circular knitting machines, we take pride in our unwavering commitment to producing top-tier fabric. Our dedication to excellence begins with the meticulous selection of quality yarn, ensuring that each strand contributes to the creation of exceptional textiles. Within our facility, we possess the capacity to tailor our production to align with the specific demands of our discerning customers, delivering bespoke solutions that exemplify our commitment to quality.



Our dedication extends to the selection of GROZ-BECKERT needles, ensuring precision in every knit. Additionally, our facility is equipped with a high-performance air compressor, further elevating the efficiency and productivity of our operations. With a devoted team focused on upholding cleanliness standards, we seamlessly integrate advanced technology, machine oil, and grease oil for meticulous upkeep, creating a space where innovation and quality converge seamlessly.

Employing state-of-the-art PAI LUNG knitting machines and precision-engineered GROZ-BECKERT needles, our unwavering commitment to excellence permeates every facet of our production process. Regular, meticulous maintenance includes comprehensive cleaning of knitting machines, ensuring optimal performance and longevity. We utilize premium gear oil for machines and grease oil for specific components, creating a well-lubricated environment that enhances overall efficiency.

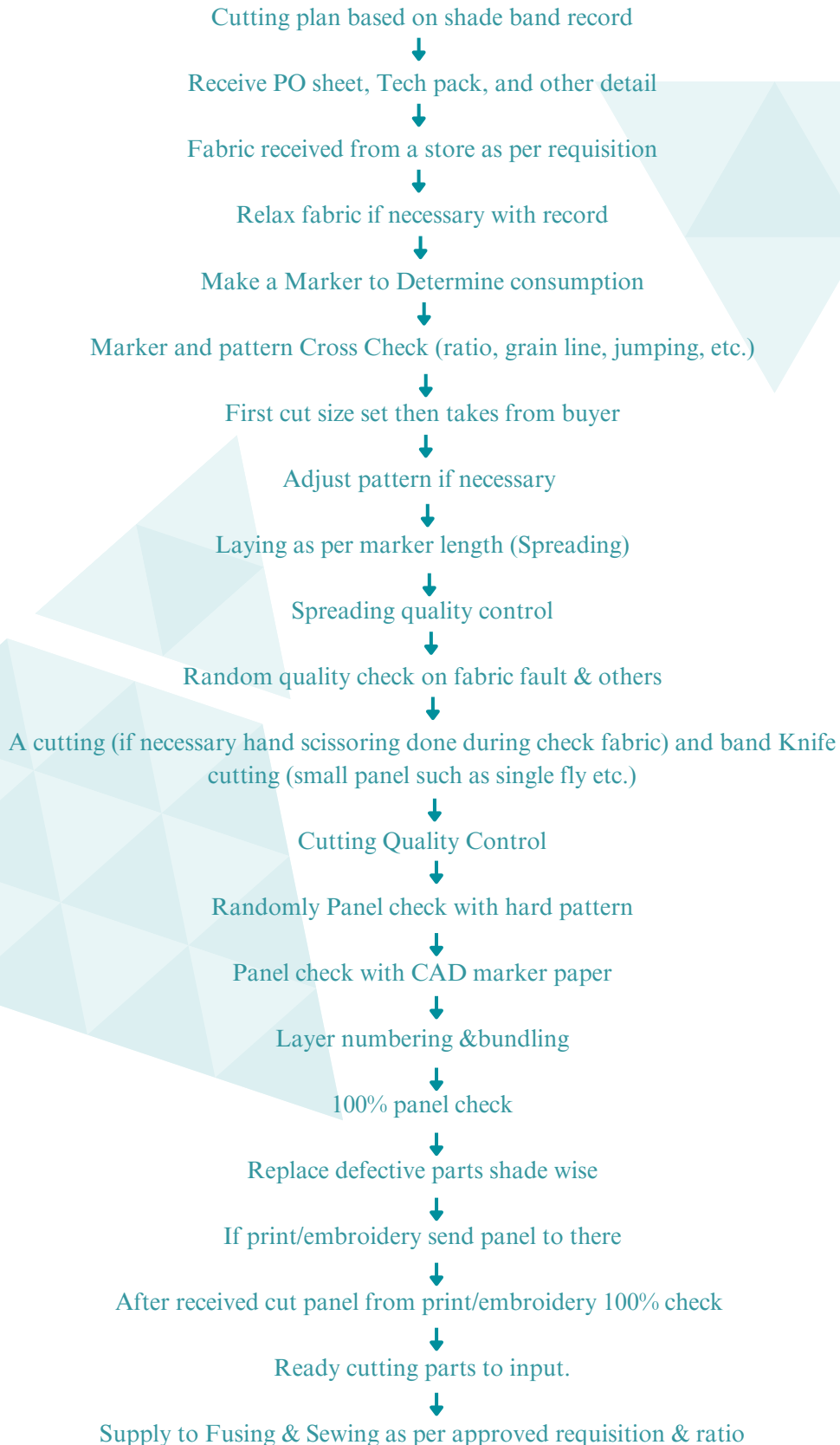


CUTTING DEPARTMENT

Cutting room is a section in the garments industry where to cut fabrics as per the pattern, marker; cutting parts sew to bring in garments form. Cutting is the most sensitive operation in the apparel industry, cutter man work accuracy is the key here to maintain good cutting quality. If you are related to the apparel industry or apparel manufacturing process you should know cutting work activities. Some certain rules and procedure have to maintain by the cutting department I am giving the cutting process flow chart step by step below for your easy understanding.



CUTTING WORKING PROCESS FLOW CHART



SEWING DEPARTMENT

Sewing is the most important operation in the process of making garments or other similar products. Generally, there are two things involved in the sewing process, i.e., stitches and seams. Leverage our production capabilities with cutting-edge machines from acclaimed brands like Brothers, Juki, and Pegasus, ensuring the preservation and enhancement of impeccable product quality through a seamless fusion of precision and efficiency.

Our commitment to quality extends to regular cleaning of sewing machines every 2 to 3 hours, using premium machine oil and high-quality sewing needles. With a dedicated team ensuring a spotless factory environment and ample exhaust fans for ventilation, we seamlessly integrate advanced technology and meticulous maintenance, fostering an atmosphere conducive to top-tier production and excellence.



Distinguished as seasoned exporters of premium ready-made garments, our commitment to excellence shines through in every aspect of our operations.

Our experienced team, prioritizing quality over quantity,

Our experienced team, prioritizing quality over quantity, transforms our sewing floor into a hub of craftsmanship. With state-of-the-art machines and active supervisors ensuring precision, we deliver top-tier products that consistently exceed customer expectations.



QUALITY CONTROL & ASSURANCE

Our quality controllers visit every process frequently to ensure the best quality as per our buyers' requirements. Our quality control personnel are stationed at all manufacturing points to ensure the best quality that meets the buyer's satisfaction. We always want to deliver satisfactory goods to our customers. We monitor the order from the sourcing of raw materials and accessories to production and up to the final packing to ensure quality goods.

Moreover, our team deploys a comprehensive set of methodologies to ensure the quality of our products. The utilization of 5S principles, Total Quality Management (TQM), KAIZEN, ANDON, JIDOKA, JIT (Just In Time), KANBAN, KPI (Key Performance Indicators) is ingrained in our practices. This ensures not only the consistency of our product quality but also fosters a culture of continuous improvement and efficiency.



We also monitor, prepare reports, and deliver the overall status of the order to the buyer/buying office with systematic follow-up on each and every stage.

Our goal is to be the best manufacturer in the RMG industry, and our policy is to deliver total-quality goods and services to all customers. We accomplish this by taking the following actions:

- Strive to satisfy and exceed customers' expectations to be accurate and on time with all deliverables.
- Focuses on continual improvement in all quality related activities and seek to prevent errors and eliminate the root causes of problem.
- Develop and maintain mutually beneficial relationships with suppliers to assure a stable supply of quality materials and services.
- Maintain competitive prices and superior financial performance by eliminating waste wherever it occurs.

FINISHING & PACKING



Only approved goods are packed and buyer is assured of getting quality merchandise. Care is also taken to see whether all packing instructions of the buyer are respected.

OUR PRODUCT

We produce huge range of products, such as Trousers, T-shirts, Tank Top, Polo Shirts, Shorts, Hoodie, Sweatpants, Sweatshirts Joggers & All Kinds of KnitGarments for Men, Women and children.



OUR PRODUCT



OUR PRODUCT



MANPOWER



• Administration	55
• Commercial & Shipping	2
• Accounts	2
• Merchandising	12
• Sample & Development	15
• Store	4
• Cutting	44
• Production	375
• Finishing	46
• Quality Control	60
• Maintenance	5
• Total	620

ETHICS & CSR

TO US, ETHICAL PRODUCTION MEAN

- SAFE MANUFACTURING ENVIRONMENTS,
- NO CHILD LABOR,
- FAIR TRADE STANDARDS UPHELD,
- ACTIVE REDUCTION OF ENVIRONMENTAL IMPACT,
- COMPLIANCE WITH ALL RELEVANT REGULATORY ORDINANCES,



Our factory partners include all small, medium and large institutionalized facilities. When our small or medium-sized factory partners produce goods, our customers can rest assured knowing that they are making a material difference to workers' lives, promoting sustainable small business livelihood, and enhancing people's opportunity for economic progress in some of the most economically challenged regions of the world.

PROCESS



WORK PLACE ENVIRONMENT

As a responsible manufacturer, **CS LEE KNIT COMPOSITE LTD** tries to provide a work environment high above the local industry standard. We have installed updated lighting, ventilation, extra fire escapes and forced duct ventilation.

The company meets all requirements for minimum wages, hours of work, overtime & living wages (higher than the minimum legal standard) and other related requirements as per prevailing laws of the country.

The goal is to reach & exceed global working standards and client expectations

CS LEE KNIT COMPOSITE LTD Strongly opposes forced labor, child Labor, racism, discrimination and exploitation of workers and makes every possible effort to discourage such misconducts

Advanced water filtering system as an effort to aid our employee's health & safety.



HEALTH & SAFETY

We subscribe and contribute to medical Centre & worker's welfare & medical fund for employees.

In addition to the above, we have an internal medical unit headed by an MBBS Doctor and a full time nurse to ensure proper medical facilities and guidelines for our employees.

We also provide free medicine to our employees and arrange first aid training for all our workers. First Aid boxes are adequately present on all floors. We also have a child care unit to take care





We maintain:

- Threat awareness & security training
- Loading/unloading training
- Business partner monitoring
- Monthly conducted internal security audit
- Drug & alcohol testing
- Internet security
- Full factory area monitored via CCTV cameras
- All vehicles are checked by metal detectors & mirrors.

The company is very much concerned about access control, physical control, procedural security, personal security and awareness training on all security concerns. All measures are in place to prevent unauthorized or unidentified access to the factory premises.

FIRE SAFETY

We have emergency fire exits stairs to ensure maximum evacuation of employees is possible in the case of fire. We regularly arrange fire training which is conducted by local authority officials. Employees are trained to use the following:



SAFETY EQUIPMENT

QTY

FIRE EXTINGUISHERS	80
TEMPERATURE & HUMIDITY DETECTORS	09
SMOKE DETECTORS	75
FIRE ALARMS	08
FIRE HOSE CABINETS	09
CCTV CAMERAS	36
EMERGENCY LIGHTS	90

BANK DETAILS

Terms Of Paymet: By negotiation of contract
Shipment Instruction: FOB / CIF
Trans-shipment: Allowed
Partial Shipment: By negotiation of contract
Insurance covered by: Client

Bank

Bank Information:

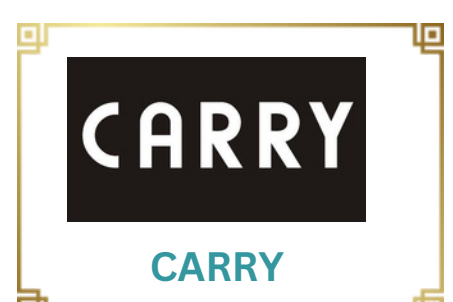
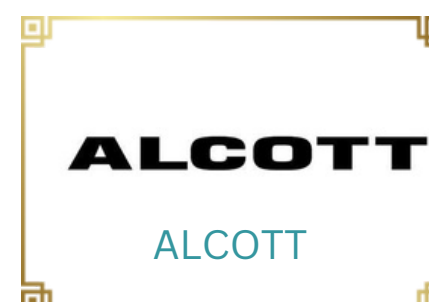
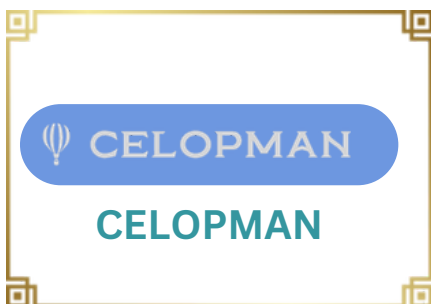


The Premier Bank Limited
Dilkusha Branch,
Raz Bhaban (1st & 2nd Floor)
29, Dilkusha C/A, Dhaka- 1000,
Bangladesh
Swift: PRMRBDDHDIL
AD:2150



UTTARA BANK PLC
FOREIGN EXCHANGE BRANCH,
69, Dilkusha C/A, Dhaka-1000,
BANGLADESH.
SWIFT CODE:UTBLBDDH435
AD:0435

SOME OF OUR VALUED CUSTOMERS



CERTIFICATES



Social compliance certificates :



STANDARD
100



EXPORT COUNTRIES



KUWAIT



FRANCE



ITALY



USA



SPAIN



CANADA



DUBAI

CONCLUSION

AT YOUR SERVICE ALL THE WAY!

Bangladesh:

No other country does it so well. All things that are needed are in Bangladesh from yarn to fabric to trims to factories to processes that provide speed to logistics and they have us.

CS Lee Knit Composite Ltd:

With our experience and know how, you will be in safe hands. We provide a complete turnkey solution to your fashion sourcing needs. IDEA - DESIGN – DEVELOPMENT – PRODUCTION - DELIVERY.

Best Quality:

We have strong quality control team to check quality at each process from fabric to finished products. Advance production methods and multiple checking of goods at various intermediate levels, our products are guaranteed for world class quality.

Flexibility:

We always will listen to your needs and customize our solutions to suit your needs. We know how important your time is. Let's see how we can save you some.

Variable MOQ:

Since we have our own brand we can offer you some of our own designs are low MOQ. Also since our factories have long time cooperation with us they support us in this.

Price & Benefit:

You can cross check our prices with our competitors, you will always see a good advantage. We guarantee you the best possible price and quality.

